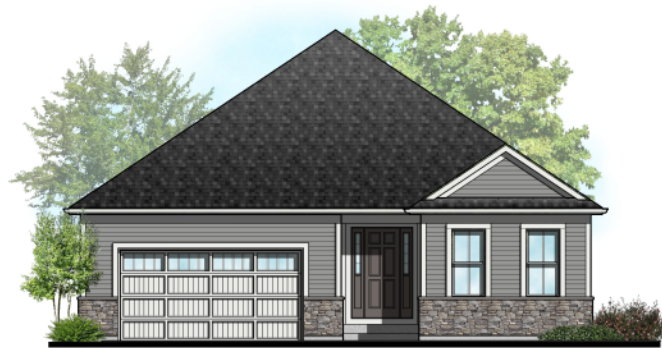




## CHATEAUX PLAN 3 - 2 BEDROOMS, 2.5 BATHS PLUS OFFICE - 2513 SQ. FT.

Detached single-family, single-story home. Fabulous Chateaux with state-of-the-art kitchen and oversized island opening to dining room and great room. Includes gracious master bedroom suite, additional bedroom, and outdoor deck off the great room that includes a gas BBQ line. Two-and-a-half baths, laundry tub, two-car garage, and full basement with optional bath rough-in.

### STYLE OPTIONS

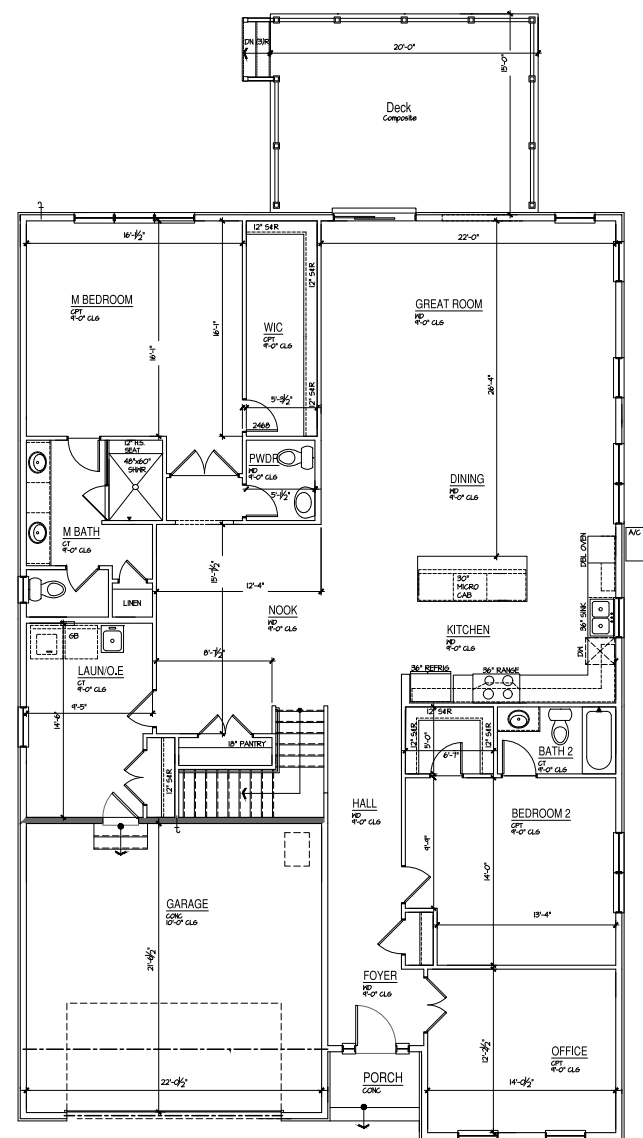


#### AMERICAN FOURSQUARE

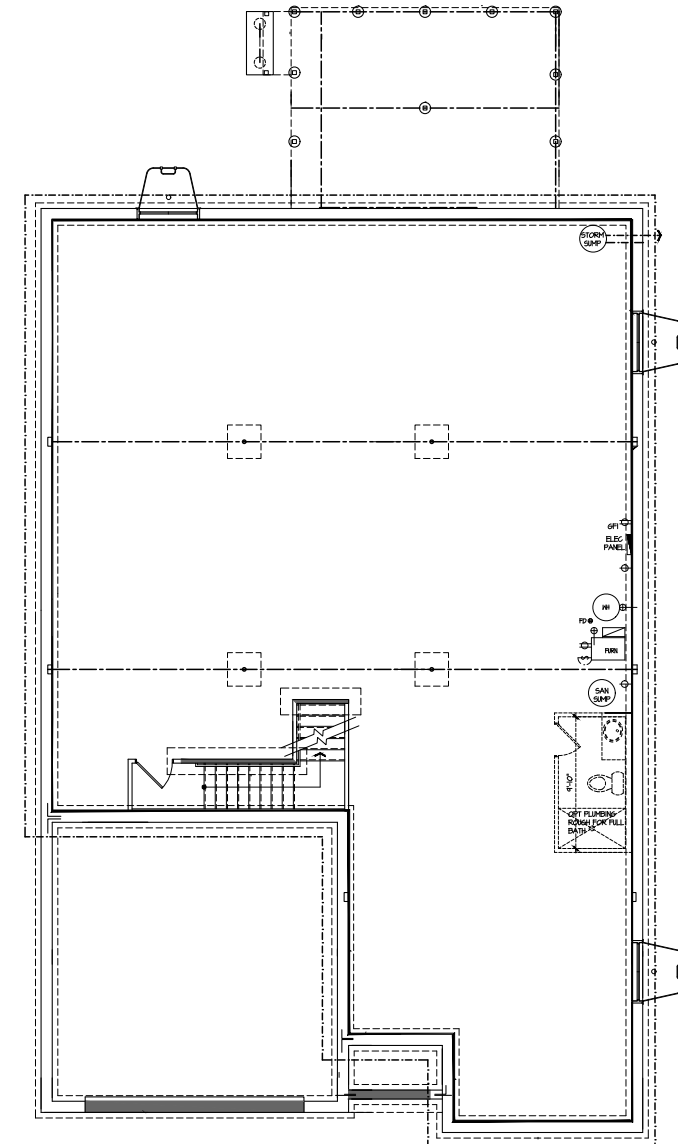
The Foursquare style gained popularity in the post-Victorian era. One of the few indigenous American styles, the Foursquare home was the earliest Prairie form and is sometimes referred to as the Prairie Box. These 2-story homes feature a simple or rectangular plan, hipped roof, and asymmetrical façade that may include one-story wings, porches, or carports. The simple form of the Foursquare lends it easily to a variety of styles and details.

#### TRADITIONAL

The Traditional style's simplified form made it popular during the housing boom following WWII and it continues to be one of the most enduring styles. Traditional homes typically have a dominant, forward facing gable and employ a mixture of masonry and siding. Most have decorative shutters, porch-roof supports and dormer elements.



MAIN FLOOR



BASEMENT

*In a continuous effort to improve our product, developer reserves the right to change specifications, equipment, features, dimensions, price or plans without notice. All dimensions shown are approximate.*