

## TERRACES PLAN 2 - 3 BEDROOMS, 2.5 BATHS - 2,099 SQ. FT.

Fabulous two-story townhome includes open kitchen with oversized peninsula which opens to huge great room. Master suite with two large walk-in-closets. Second-floor laundry, two additional bedrooms, loft, two-and-a-half baths, two-car garage and full basement.

### STYLE OPTIONS



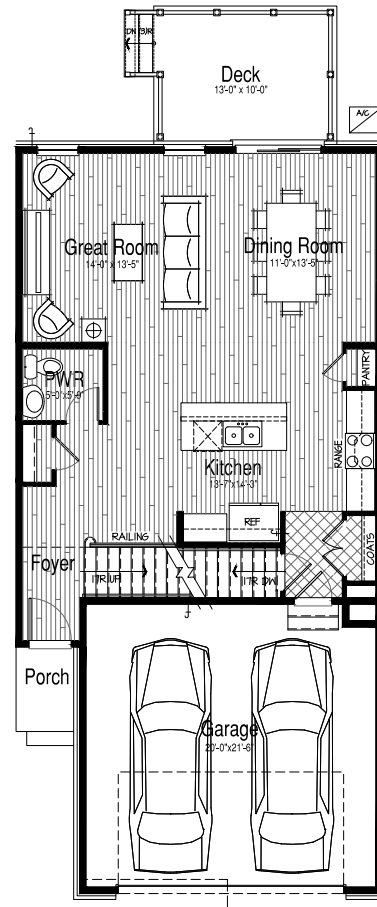
#### SOUTHERN CLASSICAL

Southern Classical style has its roots in the neoclassical and Greek revival styles and first became popular after the American Revolution. These homes are symmetrical and proportional and windows are evenly spaced. Entries tend to be elaborate with decorative pediments surrounding the front door and two-story porches with classical columns or pillars. The symmetry and traditional elements of the style evoke a sense of grandeur.

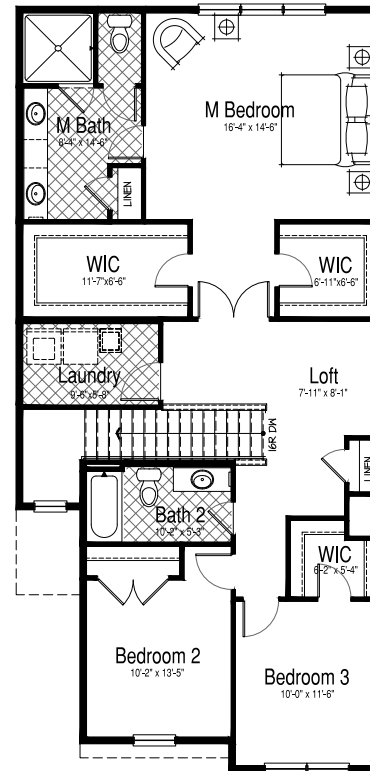


#### FRENCH COUNTRY

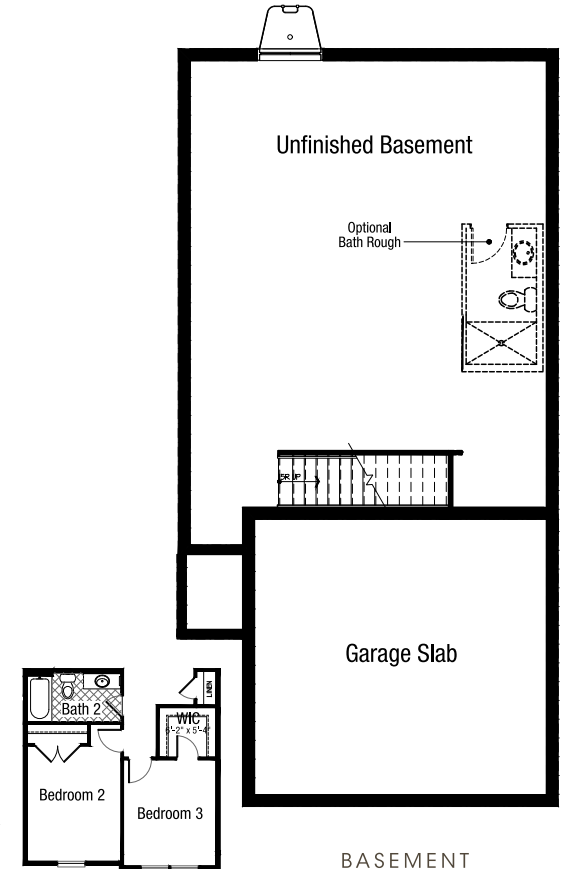
The French style captures a romantic and picturesque architecture found in Tudor and Norman country areas of Europe. This style grew popular in the United States following WW I and can be found in cities throughout the country. The Cottage, or Country style, is characterized by steep roof pitches, minimal fascia and the use of stucco as a primary exterior finish material. Stone, brick, siding, board & batten and shingles are popular exterior accent materials.



MAIN LIVING / GARAGE



UPPER FLOOR



FRONT OF UPPER FLOOR PLAN  
FOR 3-UNIT BUILDING

*In a continuous effort to improve our product, developer reserves the right to change specifications, equipment, features, dimensions, price or plans without notice. All dimensions shown are approximate.*