

VILLAS PLAN 1 - 2 BEDROOMS, 2.5 BATHS PLUS OFFICE - 1,807 SQ. FT.

Beautiful open ranch villa includes large kitchen with island and peninsula which opens to great room. Two bedrooms, plus office, two-and-a-half baths, two-car garage and full basement.

STYLE OPTIONS



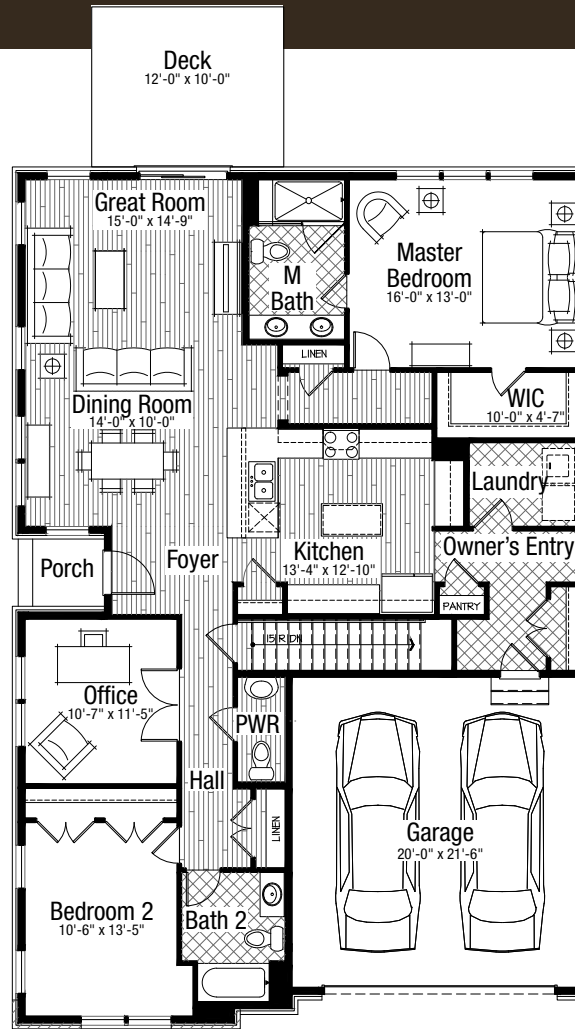
AMERICAN FOURSQUARE

The Foursquare style gained popularity in the post-Victorian era. One of the few indigenous American styles, the Foursquare home was the earliest Prairie form and is sometimes referred to as the Prairie Box. These 2-story homes feature a simple or rectangular plan, hipped roof, and asymmetrical façade that may include one-story wings, porches, or carports. The simple form of the Foursquare lends it easily to a variety of styles and details.

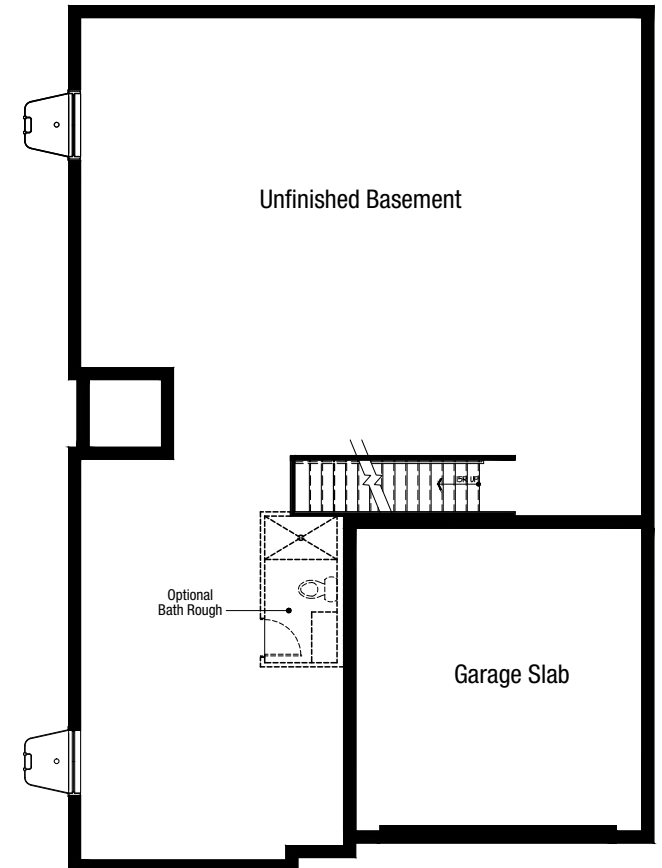


TRADITIONAL

The Traditional style's simplified form made it popular during the housing boom following WWII and it continues to be one of the most enduring styles. Traditional homes typically have a dominant, forward facing gable and employ a mixture of masonry and siding. Most have decorative shutters, porch-roof supports and dormer elements.



MAIN LIVING / GARAGE



BASEMENT

In a continuous effort to improve our product, developer reserves the right to change specifications, equipment, features, dimensions, price or plans without notice. All dimensions shown are approximate.